

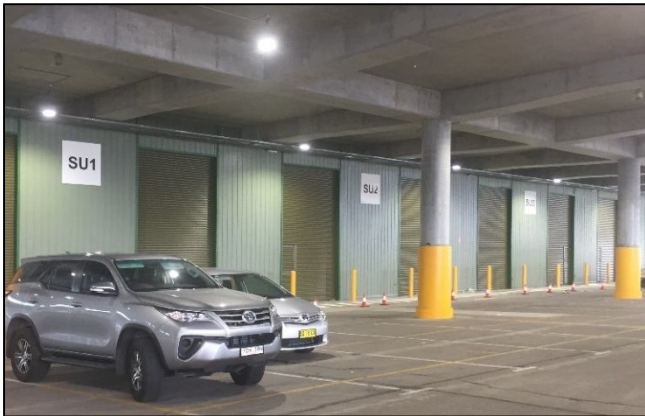
## Works around the Markets – November 2016 Update

### THIS NOTICE IS PART OF SYDNEY MARKETS' REGULAR UPDATES TO TENANTS ON WORKS BEING CARRIED OUT AROUND THE MARKETS SITE

#### Car Park V Extension

Construction work for the Car Park V Extension is nearing completion.

The new Storage Units on the Ground Level are now ready for occupation by the tenants and sections of the car parking area on Levels 1 and 2 have also been made available.



*New storage units*

The footbridge leading from Flemington Station to the Markets has been opened and provides significantly improved safety. The footbridge prevents pedestrians from crossing South Road at ground level. With fewer people now using the pedestrian crossing, traffic flow on South Road has also improved.



*New footbridge across South Road*

The 640 kW solar carport system is awaiting final testing. The solar carport structures also provide 170 shaded car parking positions.

The only major item yet to be completed is the new lift being installed on the north-western corner of the car park, which is expected to be ready for use in December.

The car park monitoring system for Car Park V and Car Park Y is on order, and will be arriving shortly. This system will indicate the number of vacant parking spaces available on each level of the car parks, which will improve the customer experience and will avoid the need to search for parking spaces.

An Official Opening event for the multi-million-dollar Car Park V Extension project is being planned for early in the New Year.

#### Building D – Upgrade of Electrical Infrastructure

The final stage of the replacement of the existing electrical infrastructure in Building D has been approved. This work will involve:

1. Removal of switchboards and power connections along the perimeter walls
2. Connection to Residual Current Devices
3. Improved safety of power connections by tenants and stallholders
4. Power reels can be connected to the base infrastructure
5. Centralised cable tray

This will reduce the cost for tenants who wish to install a cable reel and will improve electrical safety.

#### Building E Main Plant - Cooling Towers

The works to replace the cooling towers, pumps and variable speed drives for Building E have now been completed. Fine tuning will take place over the next few months during the commissioning process.

Efficiency of the refrigeration plant has almost doubled. A survey of tenants currently being conducted will determine whether further improvements can be made.

#### Building E Cold Stores

The works to replace the refrigeration plant have now been completed successfully and very good feedback has been received from the tenants. The rooms are reaching the correct temperature much faster than before.

Similar to the Main Plant, fine tuning to the Cold Stores refrigeration plant will be undertaken in the coming months during the commissioning process.



*New Cold Stores refrigeration plant*

#### Power Factor Correction Units

As part of the preventative maintenance program several power factor correction units (PFCUs) in Buildings J, T, E & S that were "end of life" have been replaced. The PFCUs improve the quality of the electricity.

**New Light Towers – North Eastern Open Car Park**

The installation of the two new 30m light towers in the Building D Eastern Open Car Park to replace the temporary light towers is now complete.

The significantly improved lighting levels will make the area safer for tenants and for loading and unloading.

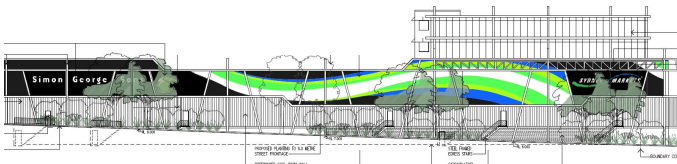
Energy efficient 490W LED Pierlite flood lights are now used instead of 1000W metal halide lights which needed to be replaced every two years.



*New 30m light towers in the Eastern Open Car Park*

**Parramatta Road - Warehouse Z**

The Development Application for the Warehouse Z on Parramatta Road was lodged with Strathfield Council for approval.



SML is now working on the construction tender documentation and the aim is to go to tender in the New Year.

**New Electricity Meters**



Most of the current electricity meters at the Sydney Markets site are analogue and will be replaced early in 2017 with new remote controlled electronic Smart Meters.

With the new meters, Ausgrid is offering monitoring of electricity consumption via a web based program. This service is available for a monthly fee.

It is recommended to talk to the Site Services Administrator Marilyn Loch on 9325 6225 and advise of their preferences.

**IMPORTANT NOTICE**

**BUILDING ALTERATIONS/  
NEW COOL ROOMS**

For any building work or cool room construction the Strathfield LEP (Local Environmental Plan 2012) (SLEP 2012) is applicable for Sydney Markets.

Strathfield Council or a Private Certifier must be contacted for any applications and approvals.

All details must also still be submitted to SML as it is still necessary for any applications to Council to be accompanied by the *Owner's Consent*, which must be obtained from SML.

If you have an enquiry in relation to Building Works, i.e. new cool room or renovations, please contact the Site Services Department.

**Contractors Working On Site**

All contractors working on site must adhere to the Sydney Markets Limited "Work Health Safety Management Plan" (WHS Plan).

Please contact SML Operations 24/7 on 0409 325 232.

To view the WHS Plan online, go to:

[www.sydneymarkets.com.au/markets/whs/work-health-safety-management-plan.html](http://www.sydneymarkets.com.au/markets/whs/work-health-safety-management-plan.html)

Tenants who engage contractors to work on site at Sydney Markets must provide the contractor's:

- Current Workers Compensation Insurance
- Public Liability Insurance (min \$20M)
- Risk Assessment and Safe Work Method Statement
- Appropriate Trade Licences

Contractors must also complete an induction and get a Hot Works Permit approved when carrying out such work.

Alternatively SML contractors can be engaged.

**For further information please contact  
Marilyn Loch, Site Services Administrator,  
on 02 9325 6225.**

**MARTIN FORSTER**  
Head of Site Services  
30 November 2016